

KAYAKING · FISHING · LODGING



LEWISTOWN · MIFFLINTOWN
Pennsylvania

TABLE OF CONTENTS

Fishing 4-13

Kayaking & Tubing 14-15

Rules & Regulations 16

Lodging 17-19



1 W. Market St.

Lewistown, PA 17044

www.JRVVisitors.com

717-248-6713

vbinfo@juniatarivervalley.org



The Juniata River Valley Visitors Bureau thanks the following contributors to this directory. Without your knowledge and love of our waterways, this directory would not be possible.

Joshua Hill
Nick Lyter
Brian Shumaker
Penni Abram
Paul Wagner
Bob Wert
Todd Jones
Helen Orndorf
Ryan Cherry

Thankfully,

The Juniata River Valley Visitors Bureau
Jenny Landis, executive director
Buffie Boyer, marketing assistant
Janet Walker, distribution manager

Welcome to the **JUNIATA RIVER VALLEY**



Located in the heart of Central Pennsylvania, the Juniata River Valley, is named for the river that flows from Huntingdon County to Perry County where it meets the Susquehanna River. Spanning more than 100 miles, the Juniata River flows through a picturesque valley offering visitors a chance to explore the area's wide fertile valleys, small towns, and the natural heritage of the region.

The Juniata River watershed is comprised of more than 6,500 miles of streams, including many Class A fishing streams. The river and its tributaries are not the only defining characteristic of our landscape, but they are the center of our recreational activities.

From traditional fishing to fly fishing, kayaking to camping, the area's waterways are the ideal setting for your next fishing trip or family vacation.

Come and "Discover Our Good Nature" any time of year!

Find Us!

The Juniata River Valley is located in Central Pennsylvania midway between State College and Harrisburg.





Juniata River

The Juniata River, the second largest tributary of the Susquehanna River, is a slow moving, low gradient river ideal for paddling, and is an angler's dream.

The river is generally easy to wade, has ample access, and has a multitude of gamefish to target. The Juniata has a reputation for producing consistent smallmouth fishing with large fish possible, topping 20 inches and five pounds. Other gamefish in the river include muskellunge, catfish, walleye, various species of sunfish, and carp.

The Juniata offers plenty of fishing opportunities year round, but summer is the safest and the most common time for water recreation. If a boat is your desire, then a shallow draft jet boat, canoe, or kayak are good choices. The bass here are easily targeted with both conventional spinning and baitcasting equipment as well as by means of the fly rod. Popular artificial baits for bass include, poppers, hard stick baits, soft plastics rigged Texas-style or on jig heads, and spinnerbaits. Live bait, such as hellgrammites, nightcrawlers, and minnows, are also effective choices. These can be fished under a float or free-lined near the bottom. For fly fishing, a basic selection of woolly buggers, poppers, and Clouser minnows are enough to get started catching plenty of bass.

With the Juniata River, you can pick the type of water that appeals to you. The upper part of the river flows at a slower pace, with slow long runs with lots of riffles down to Lewistown. Below Lewistown, the river starts dropping in elevation and moves a little faster with a mix of bridge pilings, ledges, grass beds, and deeper pools.

Access: In the Juniata River Valley, there are 10 river access areas. Find them at **fishandboat.com**

Spring

Smallmouth bass are looking for two things, slower current and warmer water. Target eddies below exposed rock or along the shoreline (especially if the water is up). You want to present your fly or lure near the bottom using a slow retrieve. Use flies or lures in a combination of black/purple or black/blue work well.



Summer

Smallmouth move to their summer feeding zones. Target the grass beds and shallow pools early and late in the day with a top water offering. During these times, you will encounter different insect hatches that will attract fish. Starting mid-morning, you will see the blue damselfly coming off the water, and smallmouth bass jumping up to catch them. As the day warms up, you will do best with a below the surface or on the bottom presentation.



PHOTO BY BOB WERT

Early fall will still produce very good top water fishing, targeting the shoreline grasses and tops of ledges. As the waters start to cool down, you will want to use flies and lures fished below the surface targeting the deeper areas below ledges and pools.

Fall




 NICKLYTERFLYFISHING

Major Streams Guide

These definitions will help you select the best stream.

LIMESTONE STREAMS –
Spring fed and flowing over limestone, these streams are more consistent in maintaining their cooler water temperatures. This is perfect for trout as the limestone acts as a natural pollution buffer, and a great regulator of pH levels.

FREESTONE STREAMS –
Running over sandstone, siltstone and shale, these streams flow seasonally based on water supply. They stay cool through late spring and warm up by midsummer. This is a great time to target species other than trout.



Susquehanna River Guides

409 Pine Grove Road
Gardners, PA 17324
717-574-5338

Website: susquiverguides.com
Instagram: [susguide](https://www.instagram.com/susguide)

Facebook: [Susquehanna River Guides](https://www.facebook.com/SusquehannaRiverGuides)

Susquehanna River Guides offer fly-fishing trips on the Juniata River for both beginners and advanced anglers. Offering full and ½ day float trips.

River Raptor Jetboats

4382 E. Main St.
Belleville, PA 17004
717-994-2288
riverraptorjetboats.com

Facebook:

River Raptor Jetboats

River Raptor Jetboats builds and sells high-quality, semi-custom, aluminum, inboard jet boats for fishing, hunting, adventure boating and search and rescue operations.



Mifflin County Stream Information

Tea Creek's headwaters lie in Rothrock State Forest. A few miles downstream from the state forest boundary, the stream reemerges as a limestone spring creek and a Class A brown trout stream. This stream, with its rich alkaline waters and near 54-degree water year-round, boasts excellent numbers of wild brown trout. The stream also holds a fantastic early season BWO hatch, which begins in March. Otherwise, scuds and cressbugs are typically reliable patterns that often produce fish here.

Access: Tea Creek is easily accessible at Mifflin County Youth Park, Reedsville.

Honey Creek, a premier, Class A midsize wild brown trout fishery, emerges from a cave where it flows to its confluence with Kishacoquillas Creek. Honey Creek, similar to the nearby and world-renowned Penns Creek, is often described as a scaled down version of its more famous, larger twin. Natural food sources include BWOs, sulphurs, grannoms and terrestrials. Spring is the best time to fish Honey Creek, although the stream fishes well most of the year. Typical patterns like pheasant tails and hare's ear nymphs work well most of the year, while patterns such as green weenies fish well in the midsummer months. Stream temperatures can sometimes get a little warm during a hot, dry summer, so a stream thermometer is a good tool to have.



Access: Honey Creek has two public parks, Bender Park, located in Reedsville and Reedsville Community Playground.

Kishacoquillas Creek is a large, limestone-influenced stream and is Class A brown trout waterway. The stream is heavily stocked with rainbow trout and brown trout in its lower reaches. The best fishing occurs from where Honey Creek meets Kish, nearly doubling the stream volume. Kish Creek is known for blizzard-like hatches of grannoms caddis, excellent BWO hatches, and a good sulphur hatch in May. The green weenie is also a very effective fly on Kish Creek in midsummer. Mann's Narrows, between Reedsville and Yeagertown, can be dangerous when waters are high.

Access: **-In Reedsville**, heading towards Yeagertown on Main Street, go over the bridge to the gravel pull-off. The gravel trail takes you to the most popular section.

-In Yeagertown, head to the baseball field at the end of Meadowfield Drive.

-Kish Park (formerly Derry Township Community Park). Campsites available.

-Lewistown Rec Park. Public parking.

East Licking Creek is a mountain freestone stream that contains wild, native brook trout and is stocked by the PBFC. East Licking Creek also has a sizable stretch of “delayed harvest, artificial lures only” section that ensures that plenty of fish remain long after the trout season opener. This creek fishes best in the spring and can get very low in summer. Spinners, live bait, and simple flies such as elk hair caddis, San Juan worms, green weenies, and woolly buggers are all effective.

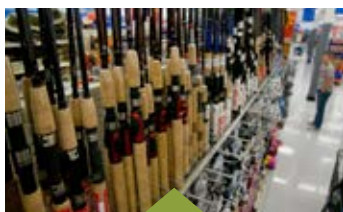
Access: This stream is easily accessed as the best water lies all within Tuscarora State Forest. Licking Creek Drive parallels the stream allowing for miles of accessible water.

Juniata County Stream Information

Blacklog Creek is a 28.5-mile freestone tributary of Aughwick Creek. It rises in the Tuscarora State Forest and flows southwest between Blacklog Mountain and Shade Mountain. It is stocked with rainbow, brook and brown trout. Natural food sources include crayfish, minnows, all stages of select mayflies and caddis flies.

Cocolamus Creek is a 22.1-mile freestone tributary of the Juniata River. It begins east Cocolamus and meets the river just below Millerstown in Perry County. It is stocked with rainbow, brook and brown trout. The Cocolamus is also home to many native species such as smallmouth bass, rock bass, sunfish, the occasional chain pickerel, fall fish, suckers and a few carp. Natural food sources include crayfish, sculpins, minnows, hellgrammites, all stages of select mayflies, caddis flies and stone flies.

Delaware Creek is a 6-mile-limestone and freestone tributary of the Juniata River. It begins west of East Salem and flows south where it joins the river in Thompsettown. This is a small stream that is home to both wild brown trout and native brook trout populations, and is a stocked trout stream, with rainbow, brook and brown trout. Smallmouth bass can be found in the lower end from Thompsettown down to the mouth. Natural food sources include crayfish, minnows, all stages of select mayflies and caddis flies.



Walmart

10180 U.S. 522 S.
Lewistown, PA 17044

717-242-6201

walmart.com

Facebook: Walmart Lewistown

No matter if you're a hobbyist getting started or a near-professional looking for some new rods, reels, and other accessories, you're sure to find something suitable for your next fishing trip.



f PHOTO BY BOB YOCUM JR

Lost Creek is a 17.5-mile freestone tributary of the Juniata River. Designated as a Class A wild trout stream from where it rises just inside of the Snyder County line and flows to Oakland Mills, this northeastern section supports a population of wild (natural reproduction) trout of sufficient size and abundance. From Oakland Mills to the river, it is designated as a stocked trout stream, with rainbow, brook and brown trout. Natural food sources include crayfish, sculpins, minnows, all stages of select mayflies, caddis flies and stone flies.

Spectacle Run is a 4-mile branch of East Licking Creek that flows east along Shade Mountain. Designated as a Class A trout stream, it is home to native brook trout. A few wild brown trout can be found closer to where it branches off from East Licking Creek. Natural food sources include minnows, all stages of select mayflies and caddis flies.

Up the Creek Outdoors

6412 Licking Creek Road
Mifflintown, PA 17059

717-574-9082

Facebook:

Up the Creek Outdoors

Up the Creek Outdoors is your local trout fishing headquarters. We have what you need for fishing, hunting and outdoor life whether you're on the river, in the woods or up the creek.





f PHOTO BY JOSHUA HILL

Tuscarora Creek is a 49.2-mile limestone and freestone tributary of the Juniata River. It flows between Tuscarora Mountain and Shade Mountain where it eventually meets the river in Port Royal. It is designated as a stocked trout stream, and is stocked with rainbow, brook and brown trout. The Tuscarora is also home to smallmouth bass, rock bass, sunfish, chain pickerel, catfish, fall fish, suckers and carp. Natural food sources include crayfish, sculpins, minnows, all stages of select mayflies, caddis flies and stone flies, hellgrammites.

West Branch Mahantango Creek is an 18-mile freestone tributary of the Mahantango Creek. It rises along Shade Mountain in Snyder County, and enters Juniata County near Richfield. It is a stocked trout stream, with rainbow, brook and brown trout. Native species include sunfish, fall fish, suckers, and smallmouth bass. Natural food sources include crayfish, sculpins, minnows, helgrammites, all stages of select mayflies, stone flies and caddis flies.

Access – The better access points for all streams across Juniata County will be at most bridges that provide ample and safe pull-off areas, as well as other safe areas along roads that parallel a particular stream. Seek permission from landowners before parking on or traversing any private property.

Pound 'Em Baits

808 Shade Road
Mifflintown, PA 17059

Facebook: Pound 'Em Baits LLC

Pound 'Em Baits offers all types of live bait, fishing rods and reels, custom musky and trout spinners, lures, nets, and hooks. Plus, camping, ice fishing and fly-fishing supplies. Coming soon are guided fishing trips.





Suggested Gear

For the conventional angler

Ultralight to medium-light rods, 5ft - 7ft in length with 2lb - 4lb test line. The best baits/lures to use will be minnows, wax worms, meal worms, red worms, nightcrawlers, small jerk baits, spinners and artificial crayfish.

For the fly fishing angler

Rods 6' - 9' in length spooled with 3wt - 5wt floating line or intermediate sinking line. The best flies to use on these waters are wooly buggers, mop flies, pheasant tail nymphs, hare's ear nymphs, midges, dry fly patterns appropriately matched for size and species, small Clouser minnows, squirmy worms, various streamers and poppers, clawdads and other crayfish patterns, as well as terrestrial insect patterns.

Tuscarora Mountain Flies

Nick Lyter

717-994-1233

nlyter927@gmail.com

Instagram - @nicklyterflyfishing

Tuscarora Mountain Flies produces effective, hand-tied fly patterns that are for success while fly fishing the Juniata River Valley. From the well-known classics like the Clouser minnow, wooly bugger, or the pheasant tail nymph to custom patterns we've found that catch fish, we will work with you to identify which flies are best for the time of year and location you'll be fishing.





Juniata River Valley

TIPS FOR ENJOYING OUR NATURAL AREAS

1. Become familiar with current fishing and boating regulations as they pertain to you. To learn more, visit www.fishandboat.com.
2. As outdoor enthusiasts, we strive to build good relationships with our local landowners. If you are scouting a particular area to fish and do not see NO TRESPASSING signs posted, it is always best to contact the landowner and ask permission.
3. Leave no trace and carry a small trash bag with you and use it.
4. Practice safe catch and release methods.
5. Report violations. If you have witnessed another person littering, or have seen litter or pollution in a specific body of water, call the PA DEP Southcentral Regional Office at 1-800-541-2050, or the PA Fish and Boat Commission Water Pollution Hotline at 1-855-347-4545.

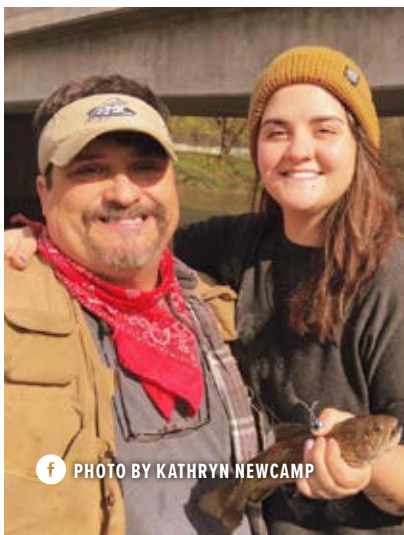


PHOTO BY KATHRYN NEWCAMP

Issuing Agents for Fishing License

Need a fishing license? Visit one of the following locations to apply for one in-person or visit the new mobile-friendly licensing service by the Pennsylvania Game Commission and Pennsylvania Fish & Boat Commission's - HuntFishPA - where you can buy a license, permit, magazine subscription, merchandise, renew a boat registration, or report your harvest.

JUNIATA COUNTY

Juniata County Treasurer, 26 Main St., Mifflintown, PA 17059 717-436-7742

Kramers Sporting Goods, Fairview Road, McAlisterville, PA 17049 717-463-3523

Longs Community Store, 9697 Route 75 S., East Waterford, PA 17021 717-734-3521

MK Sales Service Repair Inc., RR4 Box 132, Mifflintown, PA 17059 717-436-9295

Schlegel's Store, RR1, Box 181, Thompsettown, PA 17094 717-535-5197

MIFFLIN COUNTY

Dan Pierce Outdoor Shop, 842 W. 4th St., Lewistown, PA 17044 717-242-0061

Mifflin County Treasurer, 20 N. Wayne St., Lewistown, PA 17044 717-248-8439

This That & Tack, 5383 Old U.S. Highway 322, Milroy, PA 17063 717-994-4265

Walmart, 10180 U.S. Highway 522 S., Lewistown, PA 17044 717-242-6201



NICK LYTER

Juniata County stream content is provided by Nick Lyter, owner of Tuscarora Mountain Flies.

JOSHUA HILL

Juniata River and Mifflin County stream content provided by Joshua Hill, Mifflin County resident and avid fly fisherman.



BRIAN SHUMAKER

Juniata River content provided by Brian Shumaker, owner of Susquehanna River Guides.





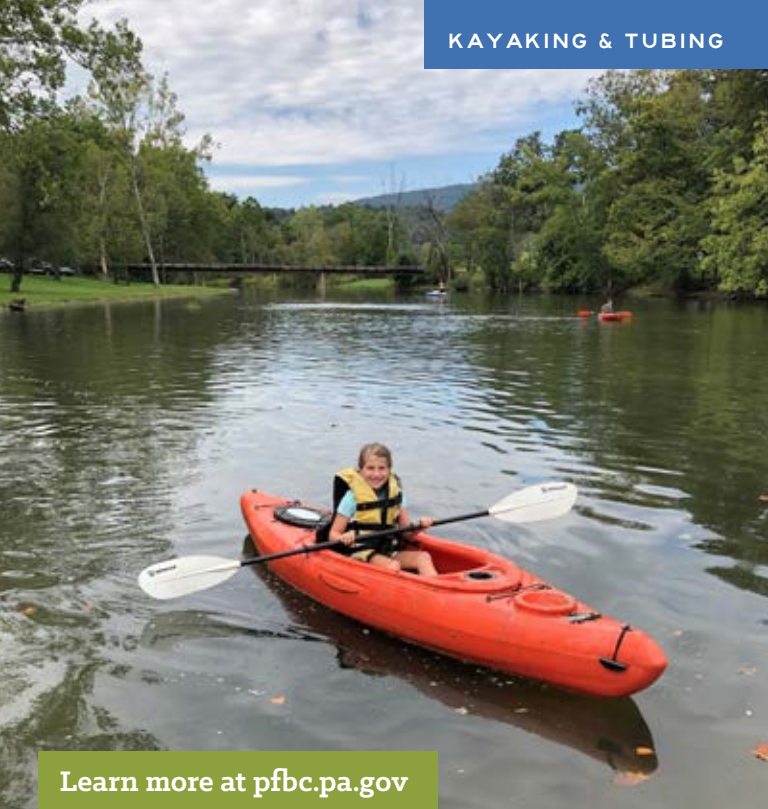
PHOTO BY CANDACE SPADE

Add a little splash to your getaway with a kayaking or tubing adventure in the Juniata River Valley.

From the calm Juniata River to winding creeks, you won't find a more relaxing way to spend a few hours with your family or friends.

The Juniata River is an ideal river for beginners because of its very flat and calm nature, allowing paddlers to practice their techniques. Proficient paddlers can try their hand in the small whitewater rapids of Kish Creek. Depending on water levels, some local streams are navigable by kayak including Tuscarora and Licking Creek. Visit the water data section of U.S. Geological Survey's website at waterdata.usgs.gov for water levels.





Learn more at pfbc.pa.gov

Looking for more detailed information about the Juniata River? Check out the Juniata River Water Trail Guide, specifically the Lower Section, created by the Pennsylvania Fish and Boat Commission.

Bring your own equipment or connect with one of our outfitters who can supply you with kayaks and canoes, but be prepared to transport the boats to and from the launch site on your own. If tubing down the river is more your style, campers staying at Buttonwood Campground can take advantage of the campground's tubes and livery service for an easy float down the river.

Countryside Harness and Outdoors

3438 Front Mountain Road
Belleville, PA 17004

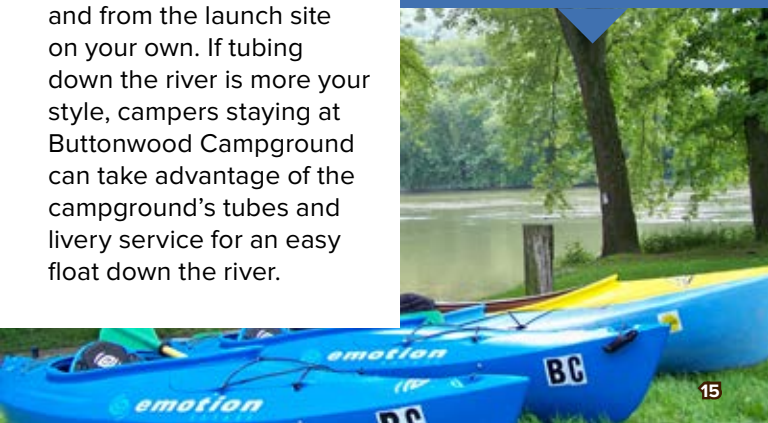
Hours:

Mon., Wed.-Fri., 7 a.m.-7 p.m.;

Tue. & Sat., 7 a.m.-4 p.m.

Closed Sunday.

Big Valley's best selection of live baits, rods, reels, lures, and ice fishing supplies. Rent a kayak or canoe to enjoy a float down the river for the day. Rentals include paddle and life vests. All boats are permitted and ready for you to haul.



Know Before You Go



There are many rules and regulations in place for operators of kayaks and other non-powered boats in Pennsylvania.

- Anyone on a kayak must have immediate access to a U.S. Coast Guard-approved life jacket and a sound-producing device to alert other boaters and avoid collisions.
- Any kayak out on the water after dusk must have a white light, either hand-held or installed, to avoid collisions.
- Location-specific regulations may be in place in some areas, and a detailed guide is available through the Pennsylvania Fish and Boat Commission website at www.fishandboat.com
- Research where you're going and create a float plan. It can take several hours on a stream to get from one access point to another. There could be obstacles to maneuver that will require you to get out and move around.
- A launch permit must be obtained if you're planning on using any state-owned access sites. If renting, confirm your boat is registered.
- Take plenty of water and sunscreen. Make sure your cell phone is fully charged, and bring a dry bag to keep your items in.
- Text or call a friend or family member before you begin your float to let them know what you're doing. This is very important in case something may happen, and you get lost on the water.
- Never operate a boat under the influence. Boating laws are the same as motor vehicle laws when it comes to intoxication levels.
- Check the weather forecast.
- Check water levels at waterdata.usgs.gov

Note: Most waterways in the Juniata River Valley have good cell phone reception for emergencies or for using Google maps.

Lodging and Accommodations

No matter where you stay, whether it's a mountainside cabin, a bed and breakfast, hotel or cottage, you'll discover our hospitality.

Our hotels and motels are conveniently located along Route 322 or if camping is more your style, we have many riverfront campgrounds where you can park your RV, rent a cabin or pitch a tent, just steps away from the Juniata River.

There are also many lodging options listed on home vacation rental websites.

Buttonwood Campground

1515 E. River Road Mifflintown, PA 17059
717-436-8334

Website: buttonwoodcamp.com

Facebook: Buttonwood Campground

Located right along the Juniata River, top-rated Buttonwood Campground allows guests to explore the water's edge or get up close and personal with tubing, kayaking, or fishing. Plus, enjoy tenting, RVing, or staying in a cabin set among the immaculate grounds.



Hotels & Motels

Best Western Nittany Inn, Milroy, 5 Commerce Drive, Reedsville, 17084.
717-667-9595. www.bestwestern.com

Budget Inn, 4268 William Penn Highway, Mifflintown, 17059.
717-436-2127. www.wyndhamhotels.com

Crown Motel, 1015 S. Main St., Lewistown, 17044. 717-248-3315.

Econo Lodge, 29 Stop Plaza Drive, Mifflintown, 17059.
717-436-5981. www.choicehotels.com

Holiday Inn Express & Suites Reedsville-State College Area,
30 Happy Valley Drive, Reedsville, 17084. 717-946-0777. www.ihg.com

Quality Inn Lewistown, 13015 Ferguson Valley Road, Burnham, 17009.
717-248-4961. www.choicehotels.com

Relax Inn, 767 US Highway 22, Lewistown, 17044. 717-248-3921.

Super 8 by Wyndham Burnham, 12886 Ferguson Valley Road, Burnham, 17009.
717-437-9224. www.wyndhamhotels.com

Waterside Campground and RV Park

475 Locust Road
Lewistown, PA 17044
717-248-3974

Website:

watersidecampground.com

Waterside Campground & RV Park offers campsites directly on the Juniata River. Enjoy swimming in our heated pool or fishing in our canal. We offer planned activities on the weekend and a playground for the kids. RV's and tents are welcome. If you don't own a RV give one of our cabin rentals a try.

Bed and Breakfasts & Cabins

13 Oaks Cabin, Red Oak Lane,
Honey Grove, 17035. 973-641-2518.
Find them on Facebook.

Bell Mountain Estates,
25 Sweitzer Lane,
Lewistown, 17044. 717-348-5526.
bellmountainestates.com

Belleville House, 4101 E. Main Street,
Belleville, 17009. 717-935-0005.
Find them on AirBnB.

Big Bear Cottage,
34 Bear Road, Richfield, 17086.

Birch Haven Cabin,
East Waterford, 17021. 717-381-1207.
Find them on Facebook.

Briar Rose B&B,
170 N Main Street, Reedsville 17084.
www.briarrosebnb.com

Brookmere Vineyard Inn,
5369 PA State Route 655,
Belleville, 17009. 717-935-5380.
www.brookmerewine.com

Burnt Timbers Cottage,
45 Fisher Bee Lane,
Granville, 17029. 717-247-8251.
burnttimbers.com/the-cottage/

Cabin by the Creek, 543 N. Ridge Road,
Mifflintown, 17059. 717-348-2488.
Find them on Facebook.



River's Edge RV Park and Campground

1274 William Penn Highway
Mifflintown, PA 17059
717-437-4291

Facebook: River's Edge RV Park and Campground

River's Edge RV Park and Campground is a new facility that is perfect for your next riverside getaway. Just steps from the Juniata River, guests will enjoy a quiet and relaxing stay. A brand-new deck overlooking the river offers wonderful sunset views, plus the campground is located next to the Midway Drive-in Theatre.



Chestnut Manor B&B, 55 Chestnut Street, Lewistown, 17044.
717-943-5791. www.chestnut-manor.com

Coffee Run Cottage, 840 Coffee Run Road, Reedsville, 17084.
717-994-2785. coffeeruncottage.com

Copeland Spring Lodge, 111 Copeland Spring Trail, Allensville, 17002.
814-553-5149. www.copelandspring.com

Dayze Gone Bye Guest House, 49 Water Street, Allensville 17002.
814-553-5149. Find them on Facebook.

Deer Run Cottage, 1395 Quaker Run Road, Richfield, 17086. Find on Vrbo.

Frieden Ru (King Cabin), 147 Hostettler Gap Road, Belleville, 17004.

Hill Store Guest Cottage, 3849 W. Main Street, Belleville, 17009.
717-935-2390. www.hillstoreguestcottage.com

Hummerhaven Farmstead, 1080 Dimmsville Rd, Millerstown, 17062.
717-589-7748. hummerhavenfarmstead.com

Lily Manor, 19161 Route 35, Mifflin, 17058.
717-994-5648. www.lilymanor.com

Milepost 142, 21132 Route 333, Thompsettontown, 17094.
717-215-9855. www.milepost142.com

Peaceful Waters Guest House, 25 Peaceful Waters Lane, Reedsville 17084.
717-667-6044. www.peacefulwatersbb.com

The Elder House, 27 Juniata View Drive, Mifflintown, 17059.
717-436-2398. www.stayattheelderhouse.com

Weiler Mansion B&B, 2588 Front Mountain Road, Belleville, 17009.
717-513-3973. www.weilermansionbnb.com

Wilson House B&B, 19175 Route 35, Mifflin, 17058.
717-436-5400. www.juniatavalleywinery.com

KAYAKING • FISHING • LODGING



JRVVisitors.com



#DiscoverJRV

Cover Photo Location:

Pomeroy-Academia Covered Bridge • Port Royal, PA

Photo by Bob Wert