

Thompstontown to Lewistown— The Slow Road PA Route 333

Downtown Lewistown—
Start or end here but the touring doesn't have to stop. Go to our website for more special interest tours like the Murals of Mifflin County and the Walking Tour of Downtown Lewistown.



PA Route 333 has been cited in motorcycle magazines and websites for its "twisty asphalt" and great views especially of the fall foliage in the Lewistown Narrows.

The tiny hamlet of **Hawstone** was named for Haws Refractory Co., a fire brick manufacturer located here from 1910-66. Actual factory ruins are hard to find but the stone from which

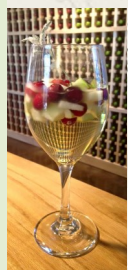
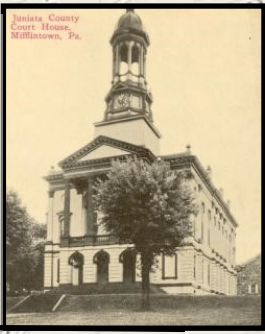


the bricks were made can be easily found throughout this narrow valley.



Dawn and dusk are the best times to try to catch a glimpse of one of the **bald eagles** as they fish in the river. They like to perch in a dead tree on the other side of the river.

The **Juniata County Courthouse** was built in the center of Mifflintown in 1831 and stands today. This charming town may hold a surprise or two. Check out other special interest tours on our website for tips. Specifically- Route 35, Juniata Co.



Hawstone Hollow Winery
Rt. 333 just before merging with Rt. 103.



The Lewistown Narrows—
Earliest

Settlers struggled through this natural gorge without room for a decent path. Five stages of transportation traversed this area: rafts on the Juniata River, boats on the PA Canal, wagons on the dirt road turnpike, trains on the railroad, and cars on the current four lane highway. The road you see now across the river is an engineering feat. One of the two specially designed retaining walls is the longest in the nation and the second longest in the world.



Mifflintown Walking Bridge—Get out of the car and stretch your legs! Find it by turning off Rt. 333 onto Rt. 35E and then left onto River Drive. Don't cross the river or you've missed it.

Mifflintown

Port Royal

Port Royal Lions Club Park—Now's the time to eat that Thompstontown Deli hoagie! Hope you brought some Hartley's Chips, too!

River Access—

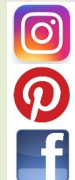
Stick your feet in the Blue Juniata or just watch the boaters and fishermen.

Thompstontown



Start at this end with a hoagie from the Thompstontown Deli. Take it on the road for a picnic at either of the next two stops.

**Juniata River Valley
Visitors Bureau**
1 West Market Street, Lewistown, PA 17044
717-248-6713, info@juniatarivervalley.org
www.juniatarivervalley.org



Find more Special Interest tours in Mifflin & Juniata Counties, on our website.